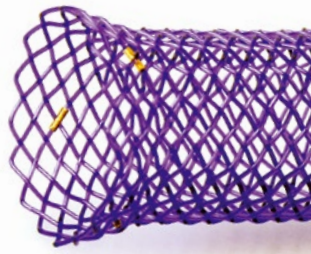


BD Stent

SX-ELLA Stent Esophageal Degradable BD



BD Stent



Biodegradation

Unique delivery system

Excellent flexibility

Radiopaque markers



3D animation



Basic description

SX-ELLA Stent Esophageal Degradable BD – BD Stent

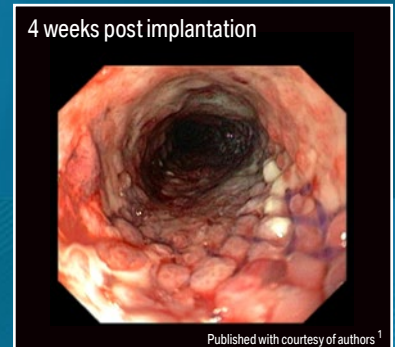
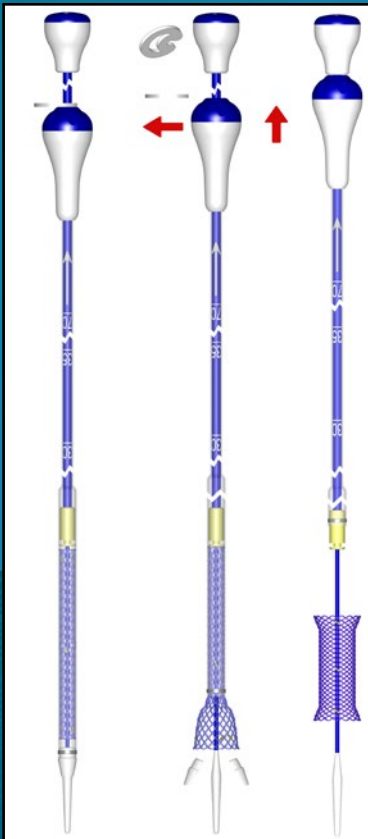
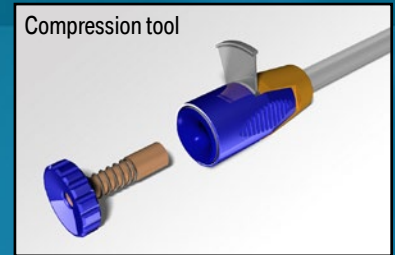
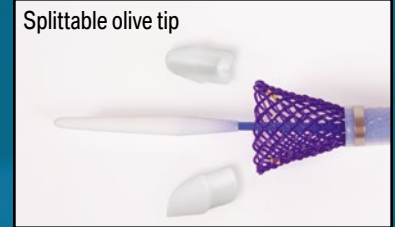
BD Stent is intended for patients aged 18 and older and indicated for management of refractory benign esophageal stenoses: refractory esophageal stenoses (peptic, caustic, or anastomotic) in which the standard therapy with repeated dilation failed.

Features and Benefits

- ☑ PULL-back delivery system - splittable olive tip - automatic detachment while stent starts releasing; olive entrapment prevention; easy insertion and safe delivery system removal.
- ☑ Radiopaque markers - accurate stent positioning.
- ☑ Anti-migration design - dual flared design; reduced migration rates.
- ☑ Integrity and radial force of stent is maintained for 6 – 8 weeks following implantation - extended period of dilation compared to conventional methods.
- ☑ Biodegradable material - Polydioxanon - stent disintegration usually occurs after 11–12 weeks following implantation; no need for removal.
- ☑ Simple compression procedure - compression tool available.

Additional description

Stent is supposed to be compressed by compression tool into delivery system just prior to implantation. 6 mm / 9.4 mm (18 F / 28 F) delivery system, available in standard length of 75 cm. Recommended guide wire: 0.035" (0.89 mm) ultra stiff / Minimum length 220 cm.



Published with courtesy of authors¹
 1. van Boeckel PG, Vlegaar FP, Siersema PD. A comparison of temporary self-expanding plastic and biodegradable stents for refractory benign esophageal strictures. Clin Gastroenterol Hepatol. 2011;9(8):653-9



Available sizes

REF No.	Stent body diameter [mm]	Stent flares diameter [mm]	Stent length [mm]
019-10A-23/18/23-060	18	23	60
019-10A-23/18/23-080			80
019-10A-23/18/23-100			100
019-10A-25/20/25-060	20	25	60
019-10A-25/20/25-080			80
019-10A-25/20/25-100			100
019-10A-28/23/28-060	23	28	60
019-10A-28/23/28-080			80
019-10A-28/23/28-100			100
019-10A-31/25/31-060	25	31	60
019-10A-31/25/31-080			80
019-10A-31/25/31-100			100
019-10A-31/25/31-135			135

Distributor:

Manufacturer:
ELLA-CS, s.r.o.
 Milady Horakove 504/45, Trebes
 500 06 Hradec Kralove, Czech Republic
 Tel.: +420 495 279 111 Fax: +420 495 265 655
 E-mail: info@ellacs.eu URL: www.ellacs.eu